



Sensores e Multi Touch

Márcio Luiz Rossato Gomes

<http://devbr.blogspot.com>

marciog@techresult.com.br

@marcio_gomes

Microsoft | Innovation Center
Brasil

TechResult
soluções em tecnologia e gestão

Microsoft
GOLD CERTIFIED
Partner

Agenda

Sensores

Definição

Tipos de Sensores

Privacidade

Arquitetura

DEMO

Agenda

Multi Touch

Requisitos

Suporte

Cenários

Movimentos

DEMO

Sensores



Definição

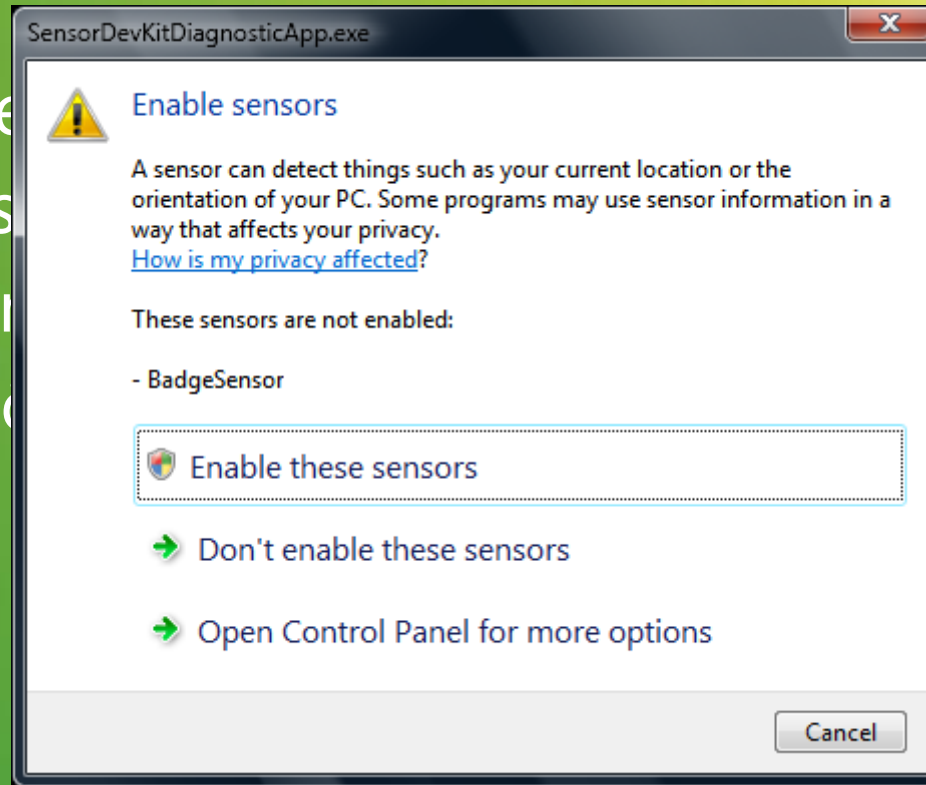
“Sensores medem fenômenos físicos ou interação física (ação de um objeto físico sobre outro)”

Tipos de Sensores

- Sensor de Luz
- Acelerômetro
- Localização
 - GPS, Wi-Fi /Cell Tower Triangulation, IP Geolocation
- Proximidade
- Temperatura
- Outros (Biometricos, RFID, etc)

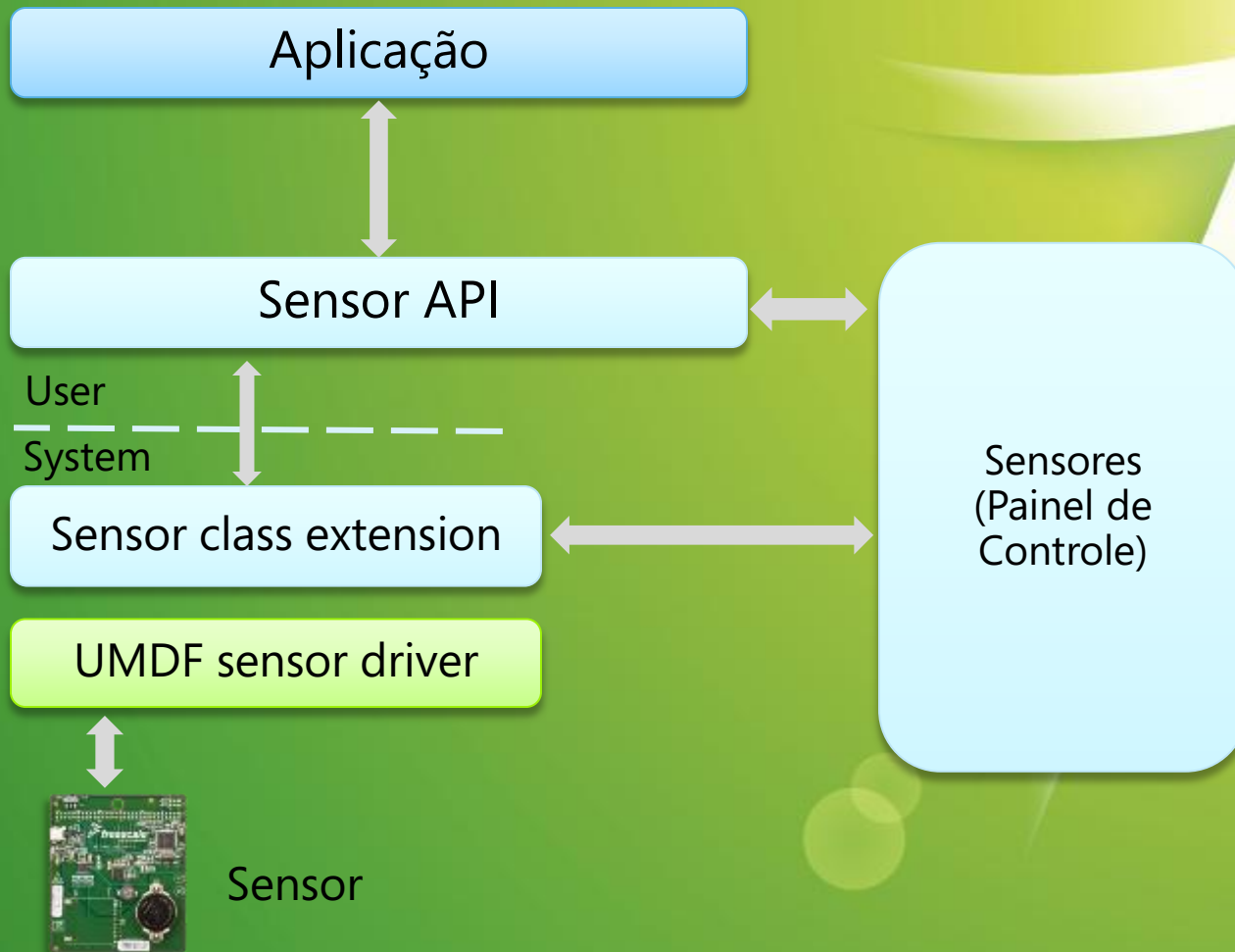
Privacidade

- Dados Cole
- Todos Sens
- Só o Admin
- As Permiss



Padrão
Sensor

Arquitetura



Interfaces

ISensorManager

Interface

Methods

- GetSensorByID
- GetSensorsByCategory
- GetSensorsByType
- RequestPermissions
- SetEventSink

ISensor

Interface

Methods

- GetCategory
- GetData
- GetEventInterest
- GetFriendlyName
- GetID
- GetProperties
- GetProperty
- GetState
- GetSupportedDataFields
- GetType
- SetEventInterest
- SetEventSink
- SetProperties
- SupportsDataField
- SupportsEvent

ISensorDataReport

Interface

Methods

- GetSensorValue
- GetSensorValues
- GetTimestamp

Classes

SensorManager

Static Class

Fields

Methods

- GetAllSensors
- GetSensorByID
- GetSensorsByCategory
- GetSensorsByType (+ 1 overload)
- RequestPermission

Events

- SensorEnter

Sensor

Abstract Class

Fields

Properties

- CategoryID
- ChangeSensitivity
- FriendlyName
- InnerObject
- MinReportInterval
- ReportInterval
- SensorAccuracy
- SensorConnectionType
- SensorDescription
- SensorDevicePath
- SensorID
- SensorManufacturer
- SensorModel
- SensorResolution
- SensorSerialNumber
- State
- TypeID

Methods

- CreateReport
- GetDataReport (+ 1 overload)
- GetEventInterest
- GetLastAsyncDataReport
- GetProperties (+ 1 overload)
- GetProperty (+ 1 overload)
- GetSupportedDataFields
- SetEventInterest
- SetProperties
- SupportsDataField
- SupportsEvent

Events

- DataUpdated
- EventReceived
- SensorLeave
- StateChanged

SensorDataReport

Abstract Class

Fields

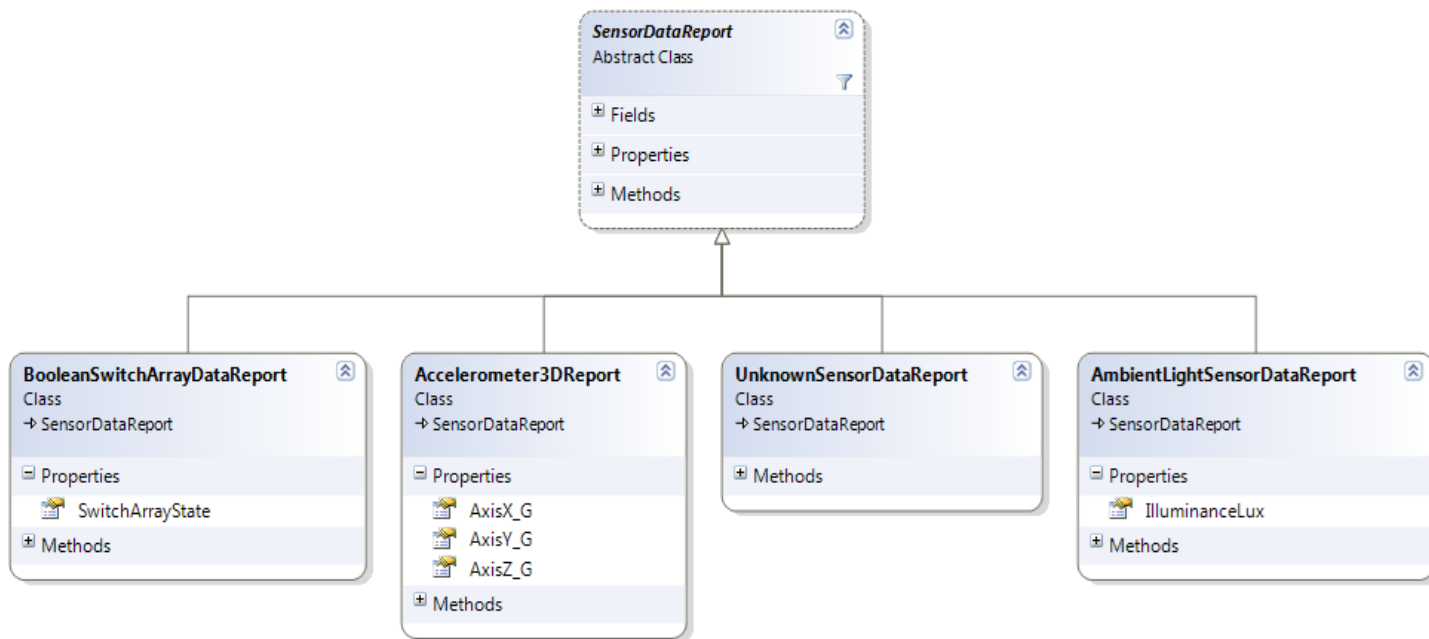
Properties

- Sensor
- Timestamp

Methods

- GetDataField
- GetDataFields
- Initialize

Modelo



WI-FI Triangulation Sensor

Demo

Respondendo a Velha Pergunta: "Onde Estou?"


Multi Touch



Requisitos

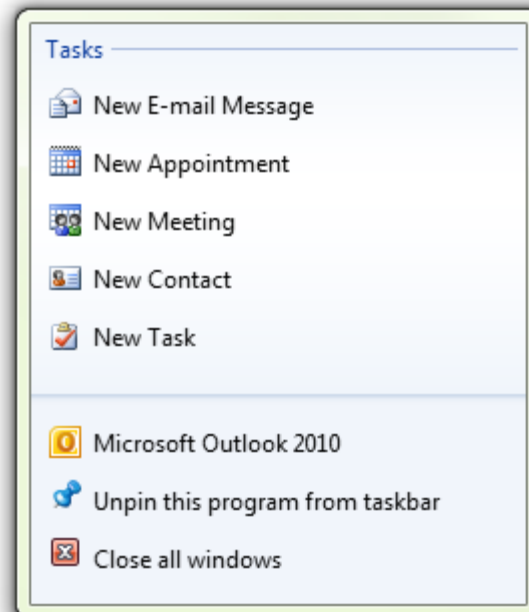
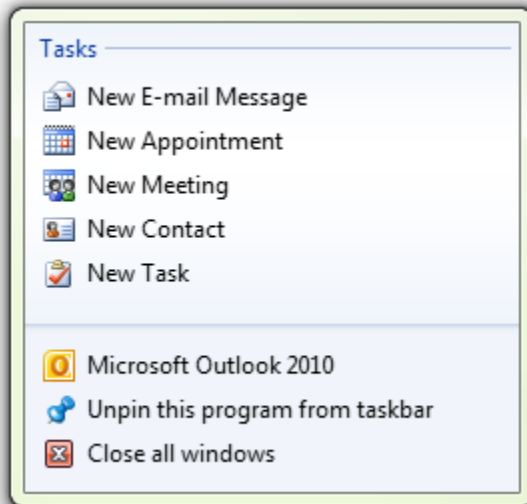
- Hardware
 - PC com suporte Multi Touch
- Software
 - Windows 7, .NET Framework 4.0

System

Rating:	 3,2 Windows Experience Index
Processor:	Genuine Intel(R) CPU U7300 @ 1.30GHz 1.30 GHz
Installed memory (RAM):	4,00 GB
System type:	64-bit Operating System
Pen and Touch:	Pen and Touch Input Available with 2 Touch Points



Suporte Touch



Cenários

Cenários Ideais para Utilização de Multi Touch

Navegação na Web

Leitura de E-Mails

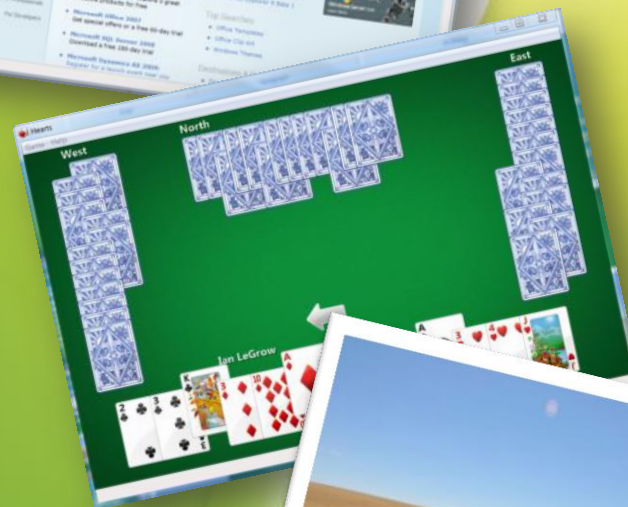
Visualizar Fotos

Jogos Casuais

Assistir Vídeos

Ouvir Músicas

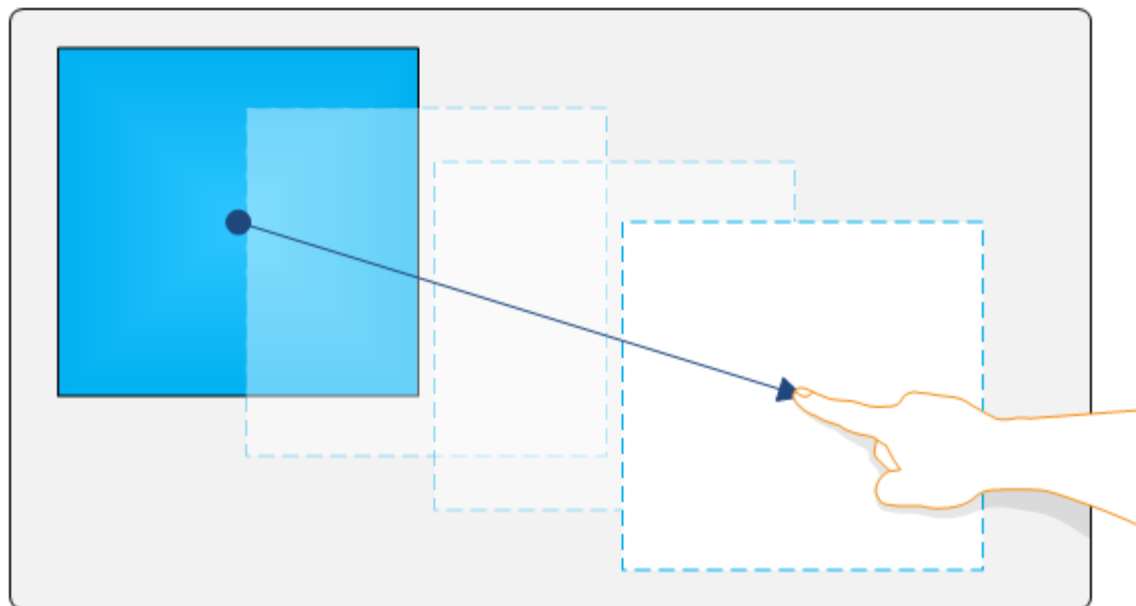
Foco em Intuitividade



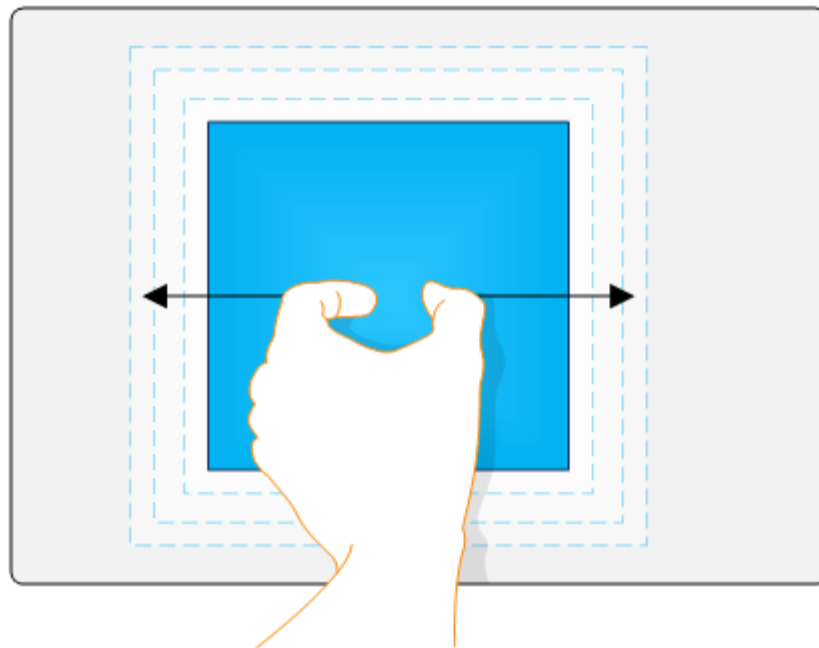
Movimentos

- São 3 os principais movimentos suportados:
 - Mover
 - Redimensionar
 - Girar

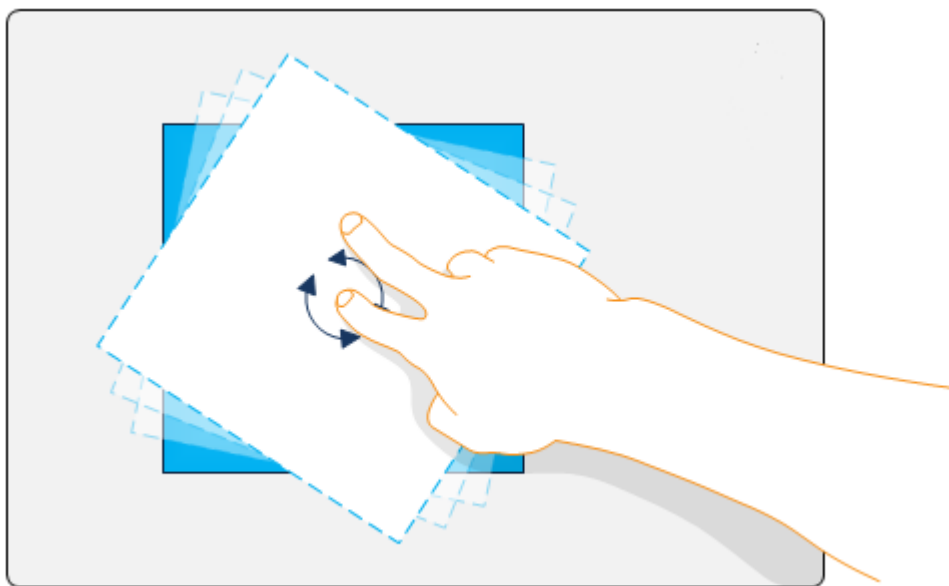
Mover



Redimensionar



Girar



Multi Touch

Demo

O Futuro ao Alcance das Mãos

Microsoft®

Your potential. Our passion.™

© 2009 Microsoft Corporation. All rights reserved. Microsoft, Windows, Windows Vista and other product names are or may be registered trademarks and/or trademarks in the U.S. and/or other countries. The information herein is for informational purposes only and represents the current view of Microsoft Corporation as of the date of this presentation. Because Microsoft must respond to changing market conditions, it should not be interpreted to be a commitment on the part of Microsoft, and Microsoft cannot guarantee the accuracy of any information provided after the date of this presentation.

MICROSOFT MAKES NO WARRANTIES, EXPRESS, IMPLIED OR STATUTORY, AS TO THE INFORMATION IN THIS PRESENTATION.

Microsoft

Innovation Center
Curitiba

Microsoft®

TechResult
soluções em tecnologia e gestão

 **CENTRO
TECNOLÓGICO**
UNIVERSIDADE POSITIVO