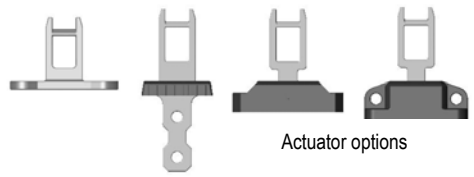


Kobra - Tongue Switches – Type K-15

New



Standard Flat Plastic Flexible Heavy Duty Flexible



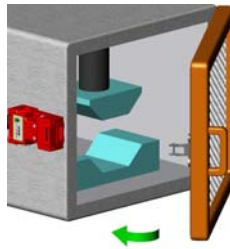
Actuator options



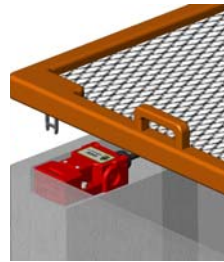
Features:

- High specification polyester body material
- Plastic or Stainless Steel Head
- 3 conduit entries M20 or 1/2" NPT
- Compact fitting 54mm wide 86mm long 40mm fixing
- IP67 enclosure protection – hinged lid
- 3 pole contact blocks
- Quick connect versions

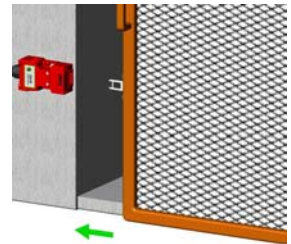
The switch head can be rotated through 180 degrees to provide ease of mounting and offer 4 different actuator entry positions



Hinged Guard

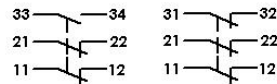


Lift off Guard

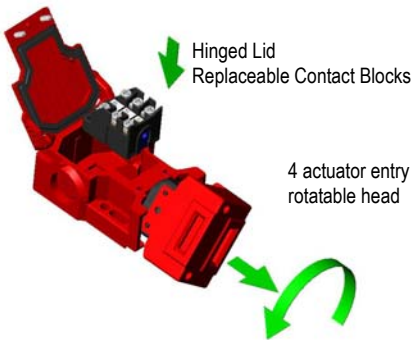


Sliding Guard

Contact blocks provide positively operated safety contacts to IEC 947-5-1



2NC 1NO 3NC

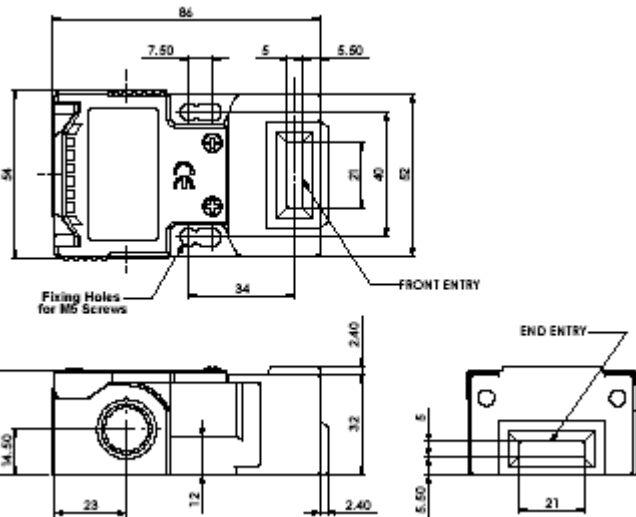


4 actuator entry positions rotatable head

Contact operation at withdrawal of actuator

2NC 1NO			3NC (1NO)		
	7.8	7.0		7.8	7.0
11/12	Open		11/12	Open	
21/22	Open		21/22	Open	
33/34		Open	31/32	Open	

- Conforming to standard EN1088, IEC 947-5-1, UL508
- Approvals cULus, TUV
- Utilization Category AC15 A300 3A.
- Thermal Current (Ith) 10A
- Rated Insulation Voltage 600VAC
- Rated Impulse Withstand Volt 2500VAC
- Insulation Resistance 100MΩmin.(DC500V)
- Contact Resistance 25mΩ max. (initial)
- Travel for Positive Opening 8mm
- Man. Actuation Frequency 2 cycle/sec
- Case Material UL approved glass-filled polyester
- Actuator Material Stainless steel
- Actuator entry minimum radius 175mm Standard 60mm Heavy Duty
- Enclosure Protection IP67
- Operating Temperature -25°C to 80°C
- Mechanical Life Expectancy 1 x 10⁶ Cycle min.
- Vibration IEC 68-2-6, 10-55Hz+1Hz, Excursion: 0.35mm, 1 octave/min
- Conduit Entry Various (See Sales Part Numbers)
- Fixing 2 x M5



Sales Number				
	Contacts	M20	1/2"NPT	QC
Kobra K-15 Switch	2NC 1NO	207001	207002	207003
Kobra K-15 Switch	3NC	207004	207005	207006
Kobra Actuator	Standard	Add A to Sales Part Number		
Kobra Actuator	Flat	Add F to Sales Part Number		
Kobra Actuator	Plastic Flexible	Add PF to Sales Part Number		
Kobra Actuator	Heavy Duty Flexible	Add HF to Sales Part Number		
Stainless Steel Head Version		Add SS to Sales Part Number		

Ordering Example: Kobra K-15 M20 2NC 1NO with Standard Actuator and Stainless Steel Head

Part No. 200704-A-SS